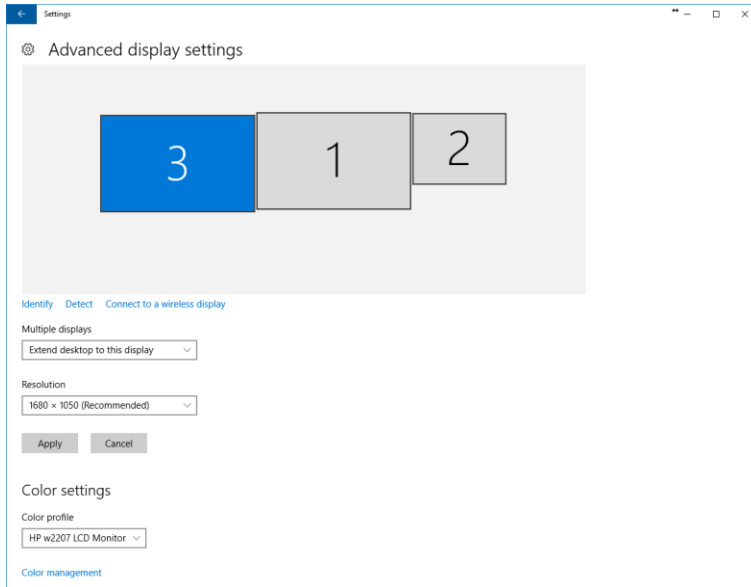
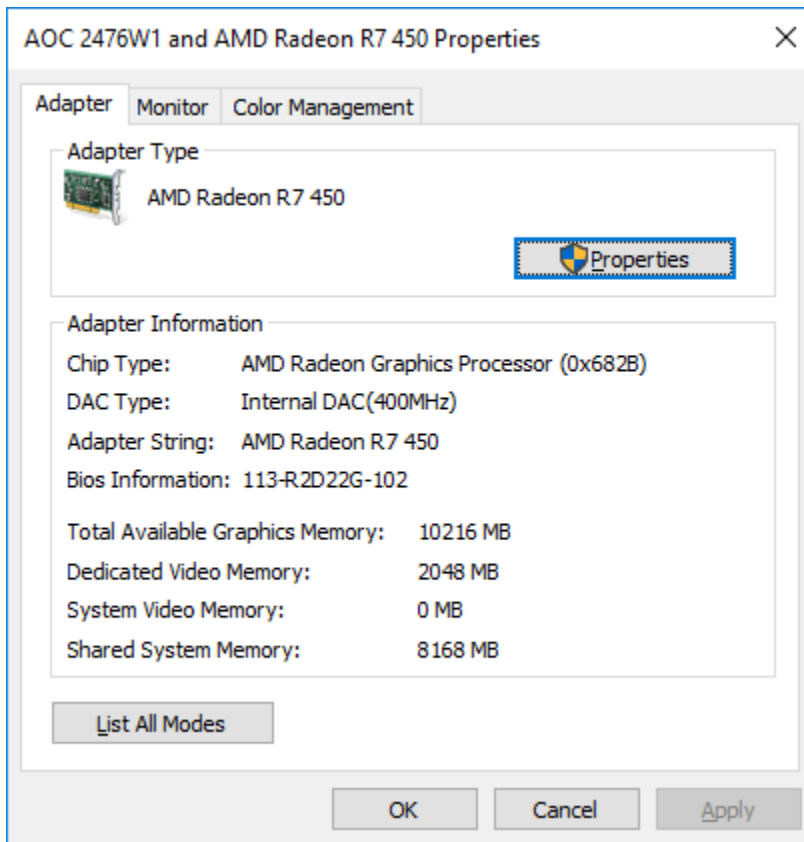


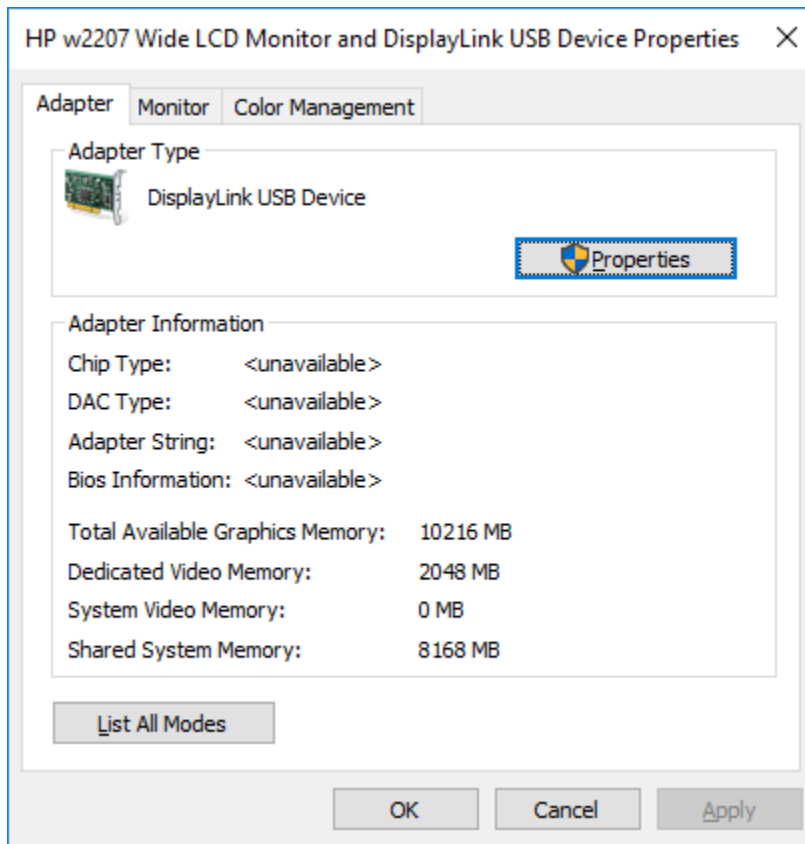
There are 3 monitors on my system. I am using 1 and 3 to display the X-Plane



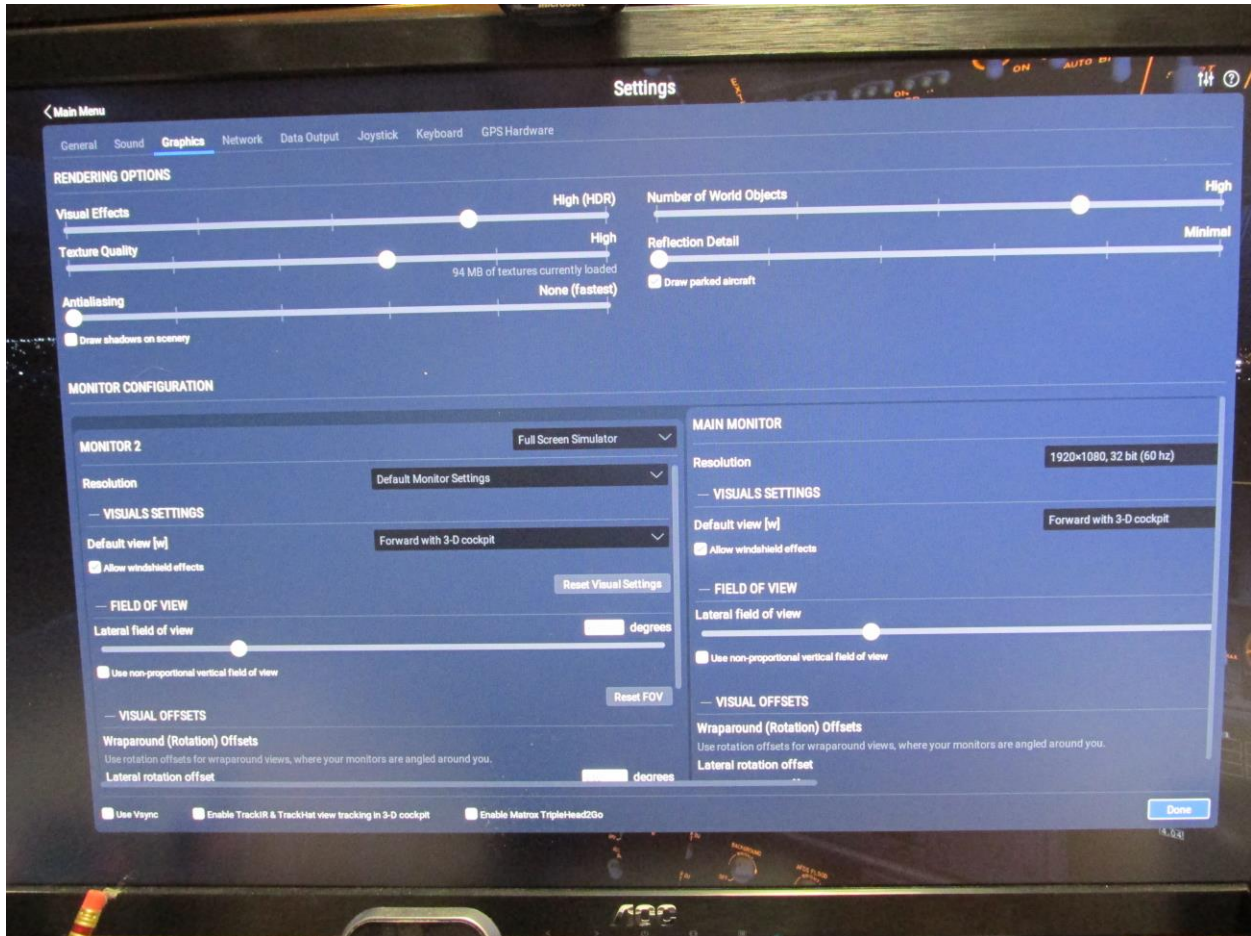
These are the properties of the monitor 1 (Main)



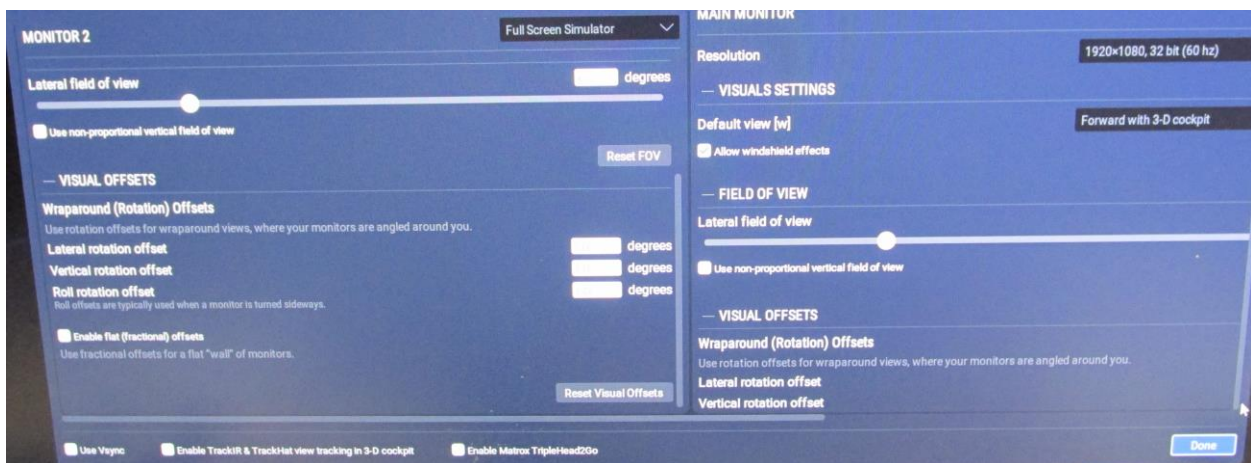
These are the properties of monitor 3



This is the graphics portion of the setup



This is the rest of the lower part of the screen.



Here is a photo of the right side of the monitor #3 and the left side of monitor #1 (main). I brought up the radio and moved it so it was partway on each screen. The left screen is blank but I can move the cursor onto it. When the cursor is moved over what should be the radio, it changes according to which control it is over (so the object is there, it is just not showing).



Clearly something is wrong with my setup since the left screen should be showing the quarter view on the left side of the aircraft. I am using the C172 shipped in X-Plane 11.